

# Dakota / Olivia Full Sleigh Bed

5107: DO-FU-PB-WH

Congratulations on the purchase of your Dakota/ Olivia Full Sleigh Bed. This bed has been crafted to the highest standards of quality and safety and will give you many years of enjoyment and practical use.

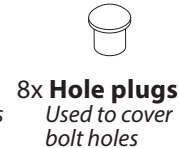
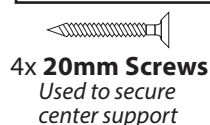
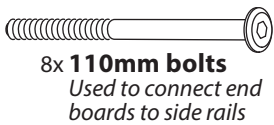
Since this bed is a natural wood product, there will be variations in color and grain, and minor checking may occur. This is normal and does not compromise the integrity of your bed. In fact, variation in character of solid hardwood is integral to the beauty and appeal of hardwood furniture, and distinguishes it from prefabricated, synthetic and composite materials.

On this insert you will find a list of the hardware and platform bed parts, as well as detailed assembly instructions. Assembly is quite simple, and requires only a flat head screwdriver and a Phillips head screwdriver. The use of a power drill with Phillips head attachment is helpful but not necessary. Assembly will be most easily accomplished if you take the time to carefully sort the hardware and familiarize yourself with the function of each piece.

If you need assistance with assembly, part replacement, or any other matter, please contact the toll-free Epoch Design Customer Service Team from Monday through Friday, 9 AM-5PM PST at 1 (800) 589-7990. You may also email your request or comments to [info@epochbydesign.com](mailto:info@epochbydesign.com) and a customer service representative will respond.

Thank you and Enjoy

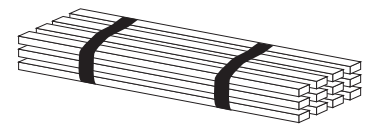
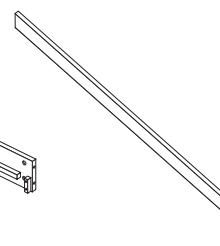
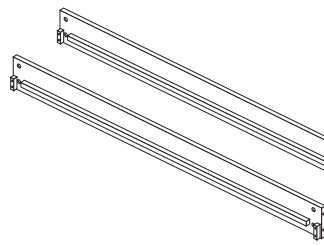
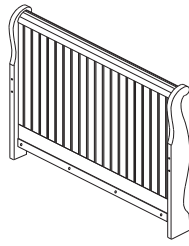
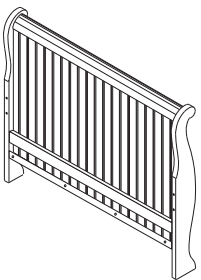
## HARDWARE



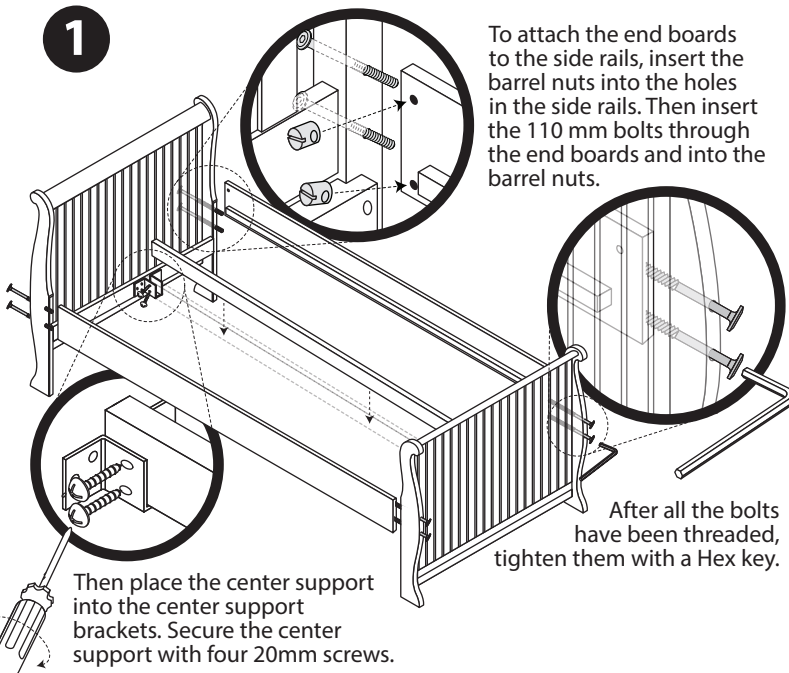
Guide

mm 10 20 30 40 50 60 70 80 90 100 110

## BED PARTS

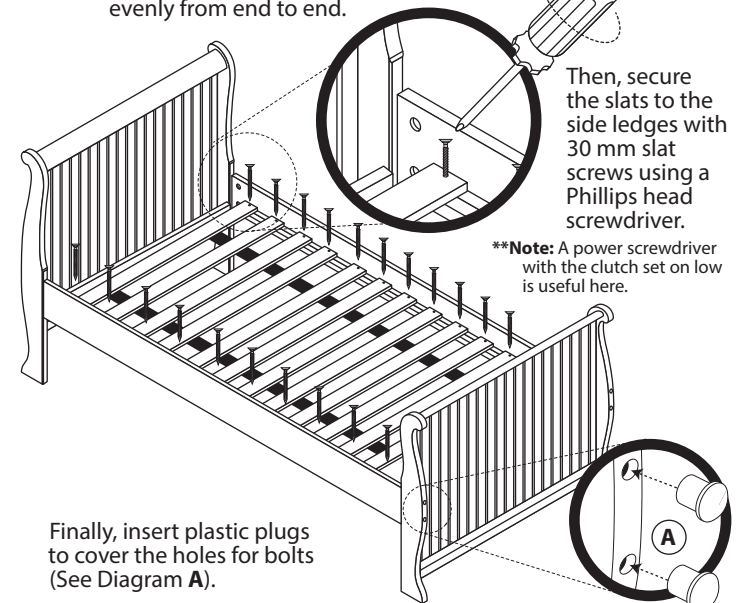


1



2

Next unroll the slat bundle (strap side down) onto side rails, distributing them evenly from end to end.



HAVE QUESTIONS OR CONCERNS? CALL US FIRST: 1-800-589-7990